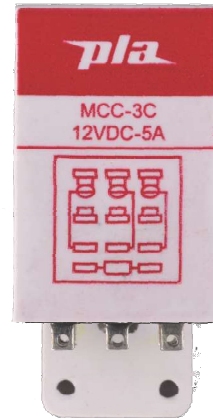


TECHNICAL SPECIFICATIONS

| TYPE | | MCC |
|--|-----------------|-------------------------------------|
| TERMINAL TYPE | | Solder |
| CONTACT CONFIGURATION | | 1C / 2C / 3C |
| RATED CARRYING CURRENT (RESISTIVE) AT 24 VDC / 250 VAC | | 5A 10A |
| CONTACT MATERIAL | | Silver alloy |
| INITIAL CONTACT RESISTANCE (MAX) | | 0.050 Ω |
| COIL NOMINAL VOLTAGES | DC | 6-220 V |
| | AC | 12-240V @ 50Hz |
| OPERATING POWER (MIN-MAX) FOR DC COIL | | 0.72 - 1.21 W |
| OPERATING POWER (MIN-MAX) FOR AC COIL | | 2.02 - 2.43 VA |
| DIELECTRIC STRENGTH BETWEEN | OPEN CONTACT | 1500 V _{RMS} |
| | COIL TO CONTACT | 2000 V _{RMS} |
| INSULATION RESISTANCE AT 500 VDC AT 27°C & 65% RH | | 100 MΩ |
| OPERATE TIME (MAX) | | 20 ms |
| RELEASE TIME (MAX) | | 10 ms |
| AMBIENT TEMPERATURE | | -25°C To +55°C |
| ELECTRICAL LIFE (NO OF OPERATIONS) | | 10 ⁵ |
| MECHANICAL LIFE (NO OF OPERATIONS) | | 10 ⁷ |
| ALL DIMENSIONS ARE IN MM (W X L X H) APPROX. | | 29 x 43(+15.5) x 34.5 |
| MAX WEIGHT IN GRAMS (APPROX.) | | 53 gms |
| STANDARDS | | IEC 61810-1 JSS-50711 & JSS50101 |



(Photo For Representation Purpose Only)



SALIENT FEATURES

- Elegant / Sturdy and Light Weight
- High Reliability

APPLICATIONS

- Machine Tools
- Textile Machines
- Bio-medical Instruments & Appliances
- Control Panels
- Industrial & Consumer electronics
- Instrumentation
- Temperature Controllers
- Electrical Equipments & Appliances
- Stabilizers
- Automation & Remote Control Systems

NOTE:- 1) This product is type tested by TUV Nord as per IEC 61810-1:2015-A1:2019

2) All Specification / Dimensions subject to Tolerance.

3) Contact form 1 A and 1 B available on request .

4) Any Techno commercial changes is / are prerogative of Manufacturer / Management of the company which can be done without any notice.



+91 9152626104



+91 7045459530



sales@plarelays.com

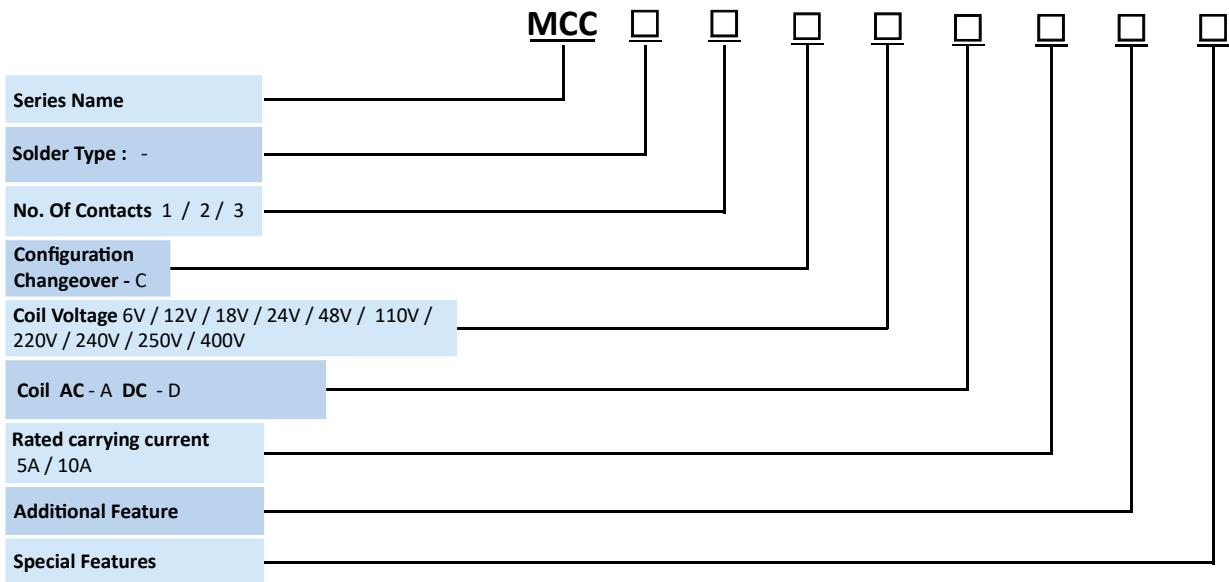


www.plarelays.com

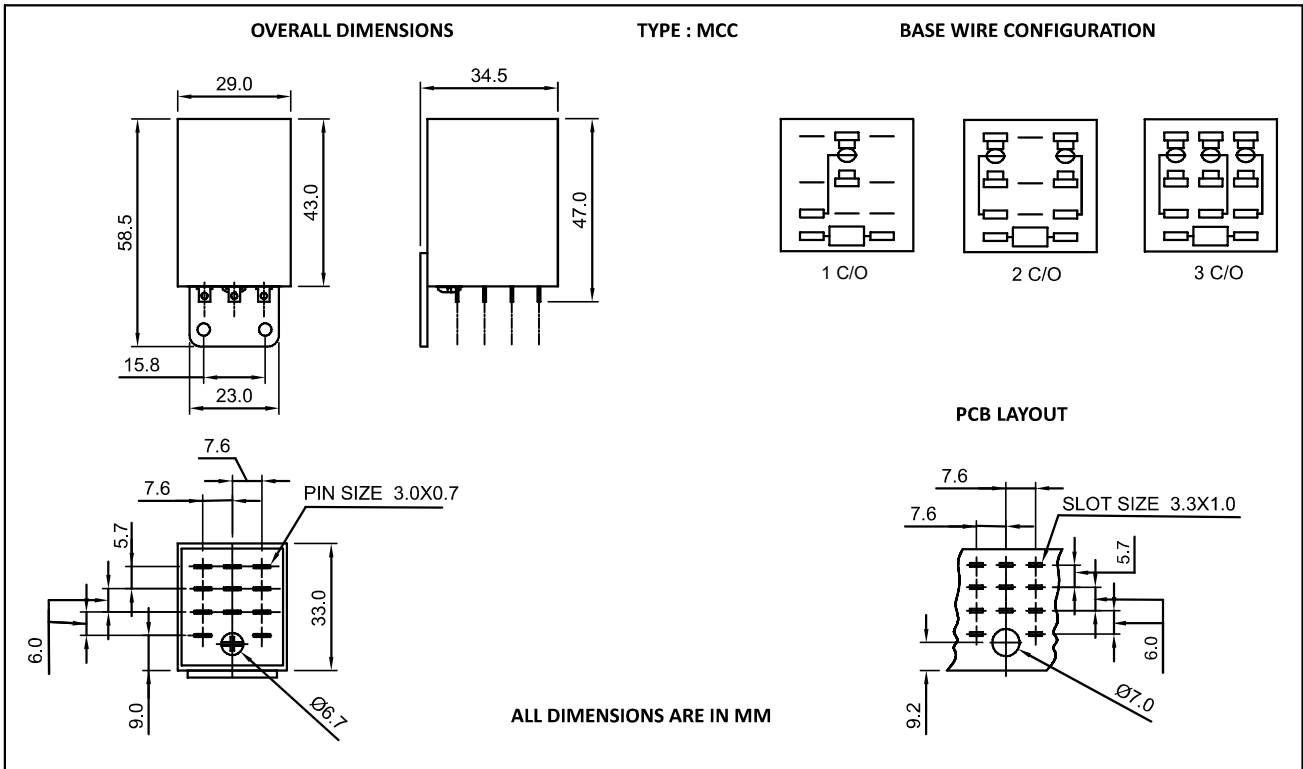
COIL – DATA (5A / 10A- MCC) (ALL VALUES AT 27°C ± 2°AMBIENT, COLD START)

| NOMINAL VOLTAGE (V) | RESISTANCE IN OHM'S ± 10% Ω | | MUST OPERATE VOLTAGE (V) | MUST RELEASE VOLTAGE (V) | OPERATING POWER FOR COIL | |
|---------------------|--------------------------------|----------|--------------------------|--------------------------|--------------------------|---------|
| | DC RELAY | AC RELAY | | | DC (W) | AC (VA) |
| 6 | 30 | 7 | 4.8 | 0.6 | 1.2 | 2.06 |
| 12 | 1C | 200 | - | 9.6 | 1.2 | - |
| | 2C | 200 | 30 | 9.6 | 1.2 | 1.92 |
| | 3C | 150 | - | 9.6 | 1.2 | - |
| 18 | 390 | - | 14.4 | 1.8 | 0.83 | - |
| 24 | 500 | 110 | 19.2 | 2.4 | 1.15 | 2.09 |
| 48 | 2.25k | 440 | 38.4 | 4.8 | 1.02 | 2.09 |
| 110 | 10k | 2.4k | 88 | 11 | 1.21 | 2.02 |
| 220 | 50k | - | 176 | 22 | 1.21 | - |
| 240 | - | 9.5k | 192 | 24 | - | 2.43 |
| 250 | 50k | - | 200 | 25 | 1.25 | - |
| 400 | - | 27k | 320 | 40 | - | 2.37 |

ORDERING CODE FOR RELAY



DIMENSIONS



NOTE :- 1) In case no tolerance shown in outline dimensions : Outline dimension 1mm, tolerance should be ± 0.2 mm
 Outline dimension 1mm and 5mm, tolerance should be ± 0.3 mm Outline dimension 5mm tolerance should be ± 0.4 mm
 2) The tolerance without indicating for PCB layout is always ± 0.2 mm



+91 9152626104



+91 7045459530



sales@plarelays.com



www.plarelays.com